



SPACEWatch pro 5 Getting Started Guide

This guide will help you rapidly find your way around SPACEWatch pro 5 (Standard and Network Editions). If this is your first time you might find it useful to print this Guide out as you start to explore its many features.

If you have any queries or comments please contact the Sharpeware team on support@sharpeware.com (you can conveniently contact us when evaluating by choosing the Help – About menu option and filling in the form you will see there).

What Is SPACEWatch pro?

SPACEWatch pro is a multi-purpose storage management tool that can quickly help you manage the files stored on your desktop or network.

It will improve your PC or network reliability and remove unwanted files, letting you find out what your storage is being used for and get back in control. It runs on Windows 2000 or later and works with Netware, UNIX and IBM Lotus networks as well.

Installing SPACEWatch pro

You can download the latest SPACEWatch pro software from <http://www.sharpeware.com>. Save the package to your local system then open it from Windows Explorer. Follow the instructions you will see on screen and you will be able to run SPACEWatch pro from your Start menu via *Programs – Sharpeware – SPACEWatch pro*.

Three Steps to Getting Started

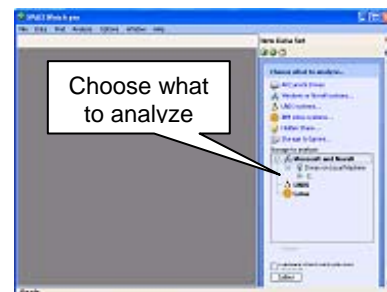
Step 1 – Scan Your Network

Choose what part of your desktop or network you will be working with. Then scan your storage to analyze your files and folders.

Choose what to analyze

First click on [Create a new dataset...](#)

If you do not see what you want listed, click on “Windows or Novell systems”, “UNIX systems” etc. to choose additional areas. To remove an area click on it then choose “Delete”.



Scan your network

When you have finished choosing what to analyze click on **Collect**

When you get more familiar with SPACEWatch you can automate this collection – particularly useful if you install SPACEWatch on a server, for example. To learn more about this search for “batch” in the Help.

Step 2 – Save Your Data

Save what you have scanned – then later you can instantly search and analyze your storage without having to re-scan.

First click on [Save this data...](#)

You can then choose where to save your scanned space data – by default this will be in the My Documents\SPACEWatch folder. You can share this data file with other SPACEWatch users or use it later – whether you are still connected to the network or working somewhere else.

Step 3 – Work with SPACEWatch pro

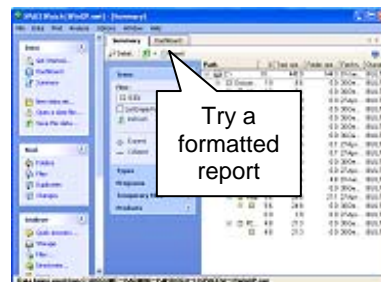
Whether you have just scanned your network, or loaded a data file you created earlier, you can now get to work with SPACEWatch pro.

Get a summary of your network

Use the summary tool to look at your space in various ways. Double click on results to see more detail.

First click on  [Summary](#)

First you will see the *Tree Summary* – look at how the trees are color-coded to quickly highlight where the most space is consumed. Initially only trees taking up more than 1% of total space are shown – this is so that lots of small trees and directories do not distract you. Use the *Filter* setting to change this.




Types lets you see what sort of files have been found. Click on “Audio Files” to see how much space is consumed by this type of file. If you double click on an entry, all files of that type will be listed in the *File Finder*.

Products lets you see what applications have been found – this information comes from within the program files and is usefully organised by manufacturer, application and version. You can also see how much space files associated with these products are consuming (and how many there are).

Wherever you are in SPACEWatch, you can use your results elsewhere. You can create formatted reports and export these to PDF, HTML and other formats. Or simply select your results and use *File – Copy to clipboard* so you can paste them into other applications such as Microsoft Excel.

Click on  [Report](#) to create formatted reports.

Find Duplicates

SPACEWatch is really good at finding duplicates of files. To get started searching first click on  [Duplicates](#)

You can speed up your search by limiting it to *Program files only* or to particular *Types* of files – or to more than a given number of duplicates.

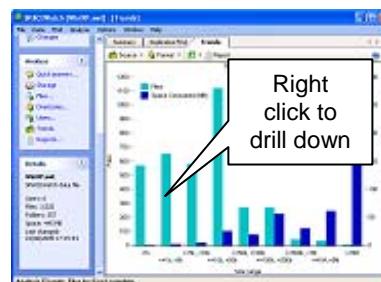
When you have found duplicates you can also view these by the folder they were found in. As well as the options you see on the toolbars and menus there are more if you right-click on a result.

See Trends

Trends are charts showing different aspects of files, folders and users over time and by space consumed.

Click on  [Trends](#) to start working.

Try *Source* to change between Files, Folders and Users. Use *Format* to change between Size and Date-based trends. As with other results, you can copy charts to other applications or use them in SPACEWatch's formatted reports.



Analyze Users

In many cases SPACEWatch can identify who owns files and folders – whether you are working with Windows, Novell, UNIX or IBM Domino networks. With this data it can prepare unique information like space use by user across your network – or at various levels in your Active Directory, Novell eDirectory or Domino Directory.

Click on  [Users...](#) to start working with these analyses.

Answers to Common Questions

If you don't find an answer below please contact us on support@sharpeware.com

Will it work with Windows NT or linux?

Yes. SPACEWatch pro will run on Windows 2000 or later and allow you to manage storage on any combination of Windows, Novell and UNIX/linux systems or IBM Lotus databases – including remote Windows NT systems. It is “Yes, Tested” for Novell systems.

Will it find duplicates, identify what to archive, make the coffee etc?

SPACEWatch pro will carry out many related functions, some of which are very sophisticated – the easiest way to tell if it will do what you want is to try it out. Alternatively just ask us!

How do I speed up initial scanning?

Instead of always having to scan your storage before you can do anything, SPACEWatch does this once then lets you save the results in a data file to re-use or share.

However, with large network it can quite some time to scan all the files and folders for the data that SPACEWatch uses.

Here are some ideas to speed this up:

- SPACEWatch pro is a database application – so more processor power and memory will speed up search and analysis
- Don't choose “calculate checksums” – this is particularly slow on large files and is only necessary if you want the best accuracy on file duplicates analysis
- Install SPACEWatch pro as close to the storage as possible – e.g. on the desktop or (Windows) server that you're analysing. It includes automation features and command line options so you can do automatic data collection on remote systems.
- Collect smaller amounts of space data and merge these together locally into one larger file for analysis. You can also automate merging from the command line.

How do I manage remote systems?

You can install SPACEWatch on remote Windows systems and automate data collection using a range of command line options. You can even automate merging of remotely created data files into one so you can conveniently carry out instant local search and analysis across your entire network. To find out more search for “batch” in SPACEWatch's Help.

What is the cost of support?

Support via email and all software updates for the lifetime of each major version are included in your licence cost. We also welcome feedback and suggestions for improvement from customers and those evaluating our software – that's how it keeps getting better!