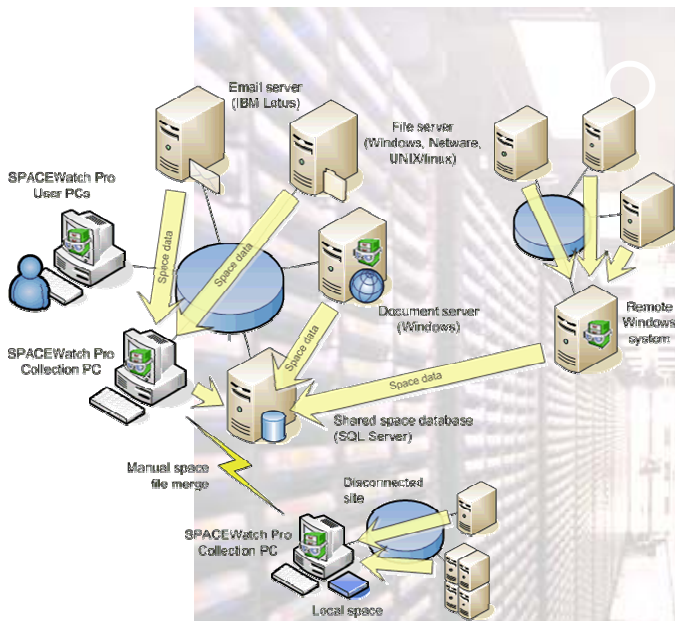


SHARPEWare

SPACEWATCH PRO (5) ENTERPRISE EDITION

www.sharpeware.com

Don't buy more storage—get rid of unwanted files.



Sharpeware's SPACEWATCH pro 5 storage management tool lets you pinpoint space use quickly and easily—on your PC or across your Network.

SPACEWATCH is a toolsuite that addresses the pain of searching and analyzing space on Windows, NetWare, UNIX and IBM Lotus networks.

Find unwanted files, spot trends and use rich reporting and export capabilities to share your results with others.

Space data can be collected at any time, locally or remotely. This data can then be used again and again for sophisticated search and analysis without the need to re-scan.

And with Enterprise Edition you can now deploy SPACEWATCH pro across your organisation and easily maintain a single shared snapshot of your data.

Use SPACEWATCH pro on your PCs or as an agent to maintain space data remotely—keep a single snapshot in a shared SQL database.

Manage data from Windows, Network, UNIX and IBM Domino systems. Share your space database with any number of

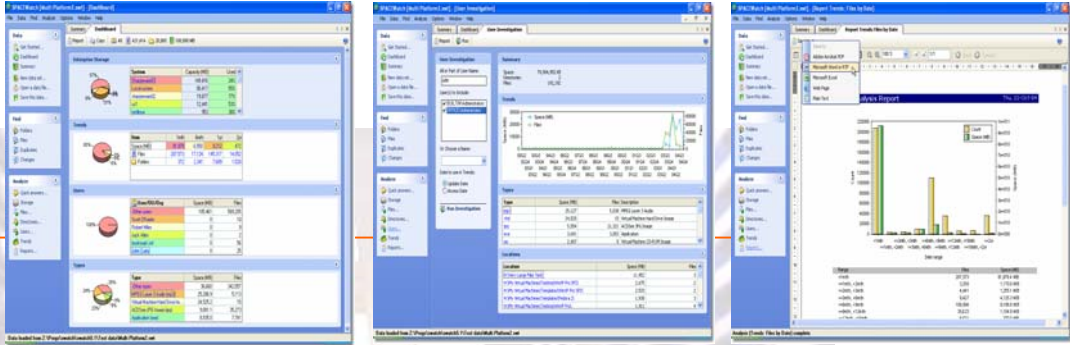


SPACEWATCH pro Editions

	Standard	Network	Enterprise
User-based analyses	✗	✓	✓
Database	Local	Local	Local or Shared
Database size limit	2GB	2GB	Unlimited

SHARPEWare Ltd
10 Gallow Hill
Peebles EH45 9BG
Scotland

Web: www.sharpeware.com
Email: sales@sharpeware.com



The Dashboard Keeps You In Control

View your Enterprise Storage; Trends; Data Types and top User space use in one at-a-glance summary.

Print off a richly formatted report to discuss your findings with others.

Load a new data set and instantly review what's happening.

Carry Out Instant User Space Investigation

Combine users across platforms and see their space use in one window.

With one click drill down to find more detail, changes or duplicates.

Review space use against your Directory to see what's going on department by department or group by group.

Share Results With Others

Save your search and analysis results any way you want.

Or save the entire data set for later analysis or comparison.

SPACEWatch supports many formats including Adobe Acrobat pdf, Microsoft Word and Excel, and Web pages (html).

	KEY TOOLS					
	Dash Board	Dedicated Summary	Search Tool	Advanced Analysis	Trend Charts	Formatted Reports
Storage	✓	✓				✓
Directories		✓	✓	✓	✓	✓
Files	✓	✓	✓	✓	✓	✓
Users	✓	✓	✓	✓	✓	✓
Apps		✓		✓		✓
Duplicates		✓	✓	✓		✓

SPACEWatch pro 5 runs on:

- Windows 9.x
- Windows 2000 Pro/Server
- Windows 2003 Server
- Windows XP

It will analyze space data from these systems:

- Windows
- Novell Netware
- UNIX and linux
- IBM Lotus Domino

SHARPEWare Ltd
10 Gallow Hill
Peebles EH45 9BG
Scotland

Web: www.sharpeware.com
Email: sales@sharpeware.com